

SENDTEXT

MARENIUS

THE WIRELESS SUB-TITLING SYSTEM



SendText is a complete system that enables theatres to offer people with reduced hearing an opportunity to understand what is spoken by, reading the text while watching the play. The system is cost effective, easy to use, durable and extendable.

The latest version offers several advantages:

- Wireless text transmission to any number of handheld units
- Simple to use both for visitors and operator
- Easily located transmitter for wide area coverage
- Several transmitters can be used in "difficult" salons
- Fast and reliable transmission of blocks of text
- Possible to transmit two language versions simultaneously
- Internal re-chargeable battery for up to 18 hours of use

Radio transmission

Transmission is on the free 2.4 GHz frequency band and useful transmission range is 30 to 200 meters, depending on walls and other obstacles.

The Handheld Unit

A novel display type, the OLED, is included in this new version of the handheld unit.

OLED's emits light in a way that makes it easy to read the display in any angle.

The display type used here has four lines of 20 characters each.



In addition, it has indicators for radio reception, battery status and A/B text selected.

The handheld unit has an internal battery that is automatically re-charged whenever the unit is connected to the supplied mains adapter/charger. A red LED indicates charging state.

The unit is built in a plastic case with a smooth rubber-like surface on both sides.

There is no external antenna and there are no sharp corners, only a single key for selection of text A or B or power on/off.

The internal NiMH battery will, fully charged, keep the handheld unit alive for about 15 hrs.

Charge time is approx. 8 hours.

The Transmitter

The system also includes one or two transmitters. For larger areas a dual transmitter system is recommended. The second transmitter then act as repeaters. Any number of handheld units may be in use in the area.

For maximum reliability the text blocks are repeatedly transmitted at intervals of 0.5 seconds.

For natural reasons the master unit has to be located within 3 meters from the PC in use, while the slave unit can be located in a position where it has good coverage across the entire salon.



The requirements for a good location is:

- Close to a wall outlet
- High and free location
- Free view to the audience

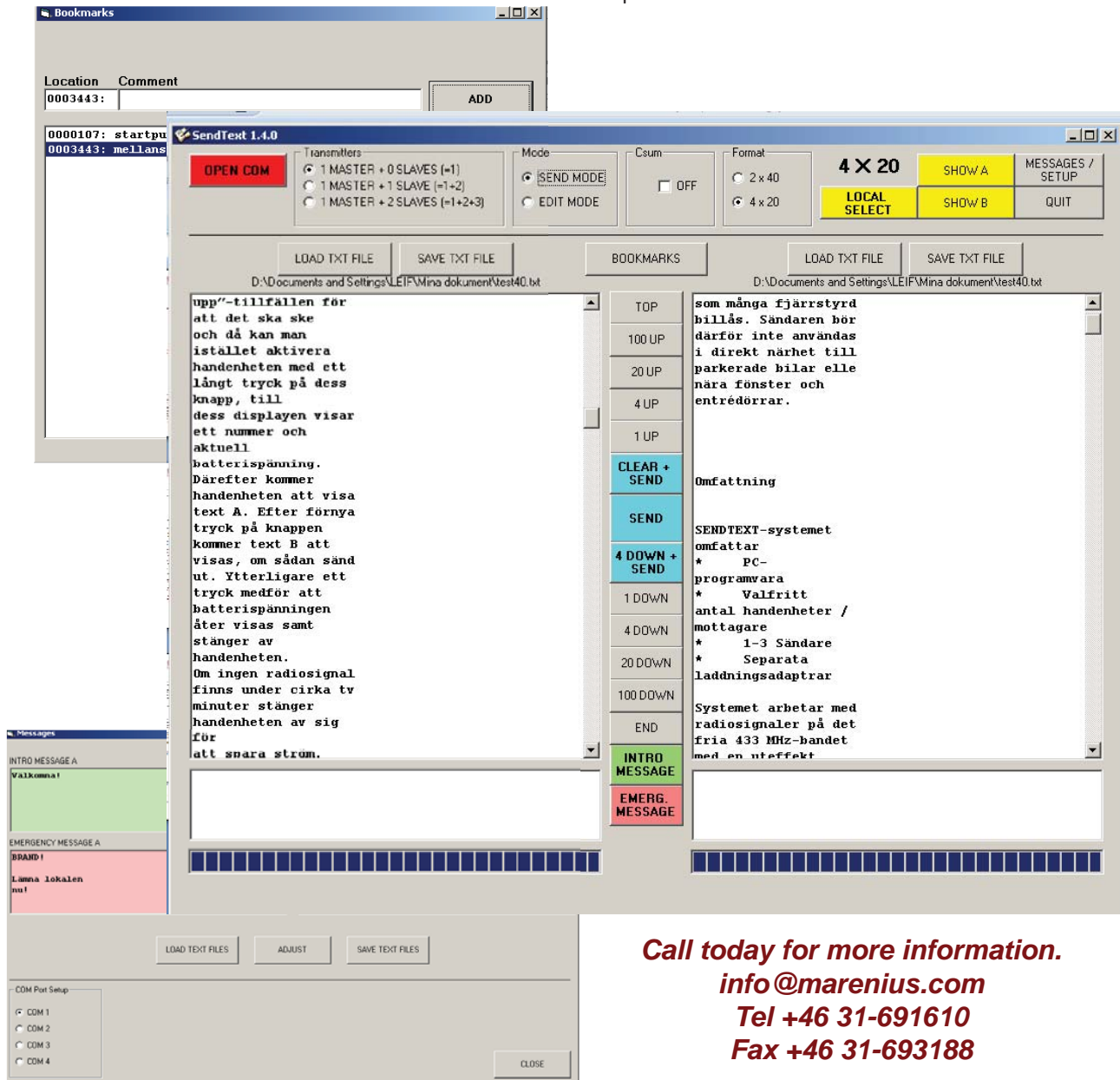
The slave unit may be permanently powered. It will enter sleep mode when not in use.

The Software

The PC software is designed for Win/XP and Win/Vista and is both an Editor and a Transmission Control Center. In Edit Mode it will handle formatting of an imported text file so that there is no single line of text being longer than 20 characters. In addition, it is possible to add or delete text and then save the result as a transmission-ready text file.

SendText offers a number of functions:

- Range test, for easy verification of reception in all handheld units and positions.
- Edit mode, for adjusting and conforming the text for viewing on a 4 x 20 characters display.
- Send mode, the normal use of the software where blocks of text are sent while the play continues.
- Standard messages, for a welcome screen or an emergency message.
- Quick mode, for immediate display of a message.
- Bookmarks, offering a fast and easy shortcut to selected parts in the text block.



Call today for more information.
info@marenius.com
Tel +46 31-691610
Fax +46 31-693188

MARENIUS
 ELEKTRONIKUTVECKLING AB
 - Designers of Electronics -



P O Box 5086
 SE-42605 V Frolunda, Sweden
 Tel +46-31-691610
 Fax +46-31-693188
 info@marenius.com

MARENIUS are designers of electronics for pro-audio, video, telecom, surveillance and engine control. We have in-house facilities for hardware and software design, mechanical and plastic mold design as well as production and testing.

Visit www.marenius.com for more information about other MARENIUS products.